

PRINTER TEST

1. PURPOSE OF THIS DOCUMENT

Most of the current inkjet printers are capable of producing great photographic images and business graphics. However, the low speed and relatively high printing costs make them inadequate solution for the departments with large monthly volumes of colour printouts. That's why laser colour printers are unrivalled for printing large quantities at lower cost.

This document contains text, business graphics, tables and graphical elements to help evaluating the quality of the tested laser colour printers.

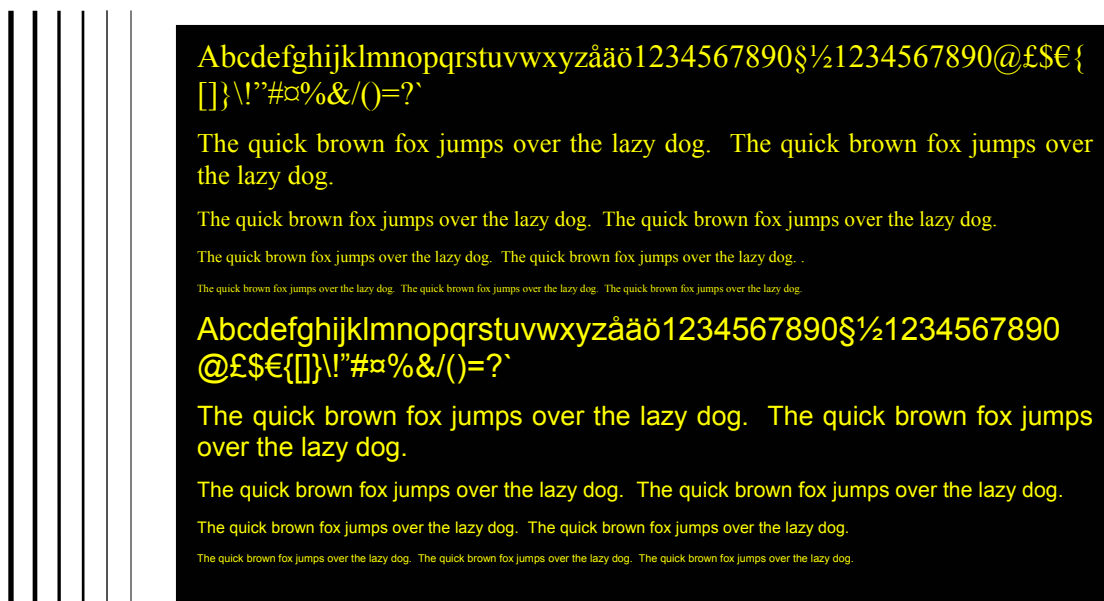
2. HOW TO PRINT THIS FILE?

To be comparable with other samples, **this document must be printed according to the following rules:**

Instructions for printing this test file

<i>System Requirements</i>	Make sure <i>Windows XP SP3</i> (or at least SP2) and Adobe Acrobat Reader (v7 or higher) is installed on the system. Print this file using Adobe Acrobat.
<i>Printer Drivers</i>	The latest <i>publicly available</i> printer drivers for Windows XP must be used.
<i>Print Settings</i>	Use the default settings for colour printouts. Do not optimise the settings to specifically match this document.
<i>Printer Calibration</i>	Not allowed. Printout must reflect "out of the box" experience.
<i>Paper Quality</i>	Use <u>Normal white A4 paper</u> for laser printers, weight maximum 80 g/m ² . Please do not use high-quality paper.

3. TEXT BOXES WITH SMALL FONT SIZE – #1



4. TEXT BOXES WITH SMALL FONT SIZE – #1



5. SMALL TEXT TEST

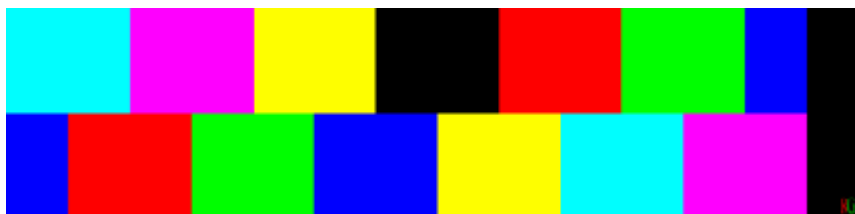
Printing small text turns often out to be a problem for both the inkjet and laser printers. While *droplets from the inkjet printers* have a tendency to spread on a porous paper, laser printers might produce rough edges as well. Differences between the results of various printing technologies and printer models might not be noticeable at first with normal size text. But when using an **exceptionally small font size**, you'll be bound to see more differences between different devices.

Printing small text turns often out to be a problem for both the inkjet and laser printers. While *droplets from the inkjet printers* have a tendency to spread on a porous paper, laser printers might produce rough edges as well. Differences between the results of various printing technologies and printer models might not be noticeable at first with normal size text. But when using an **exceptionally small font size**, you'll be bound to see more differences between different devices.

6. GREYSCALE TEST

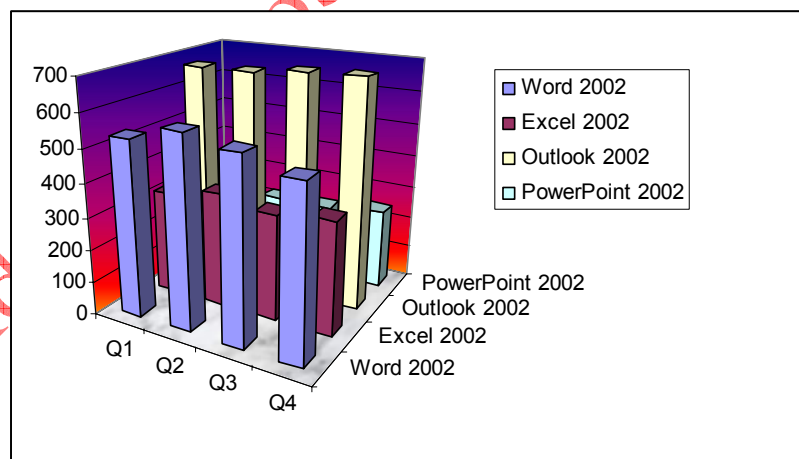
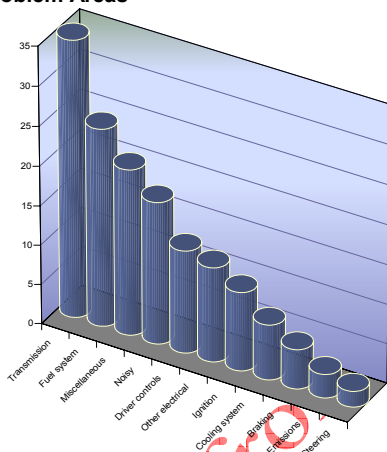


7. COLOUR BLOCKS TEST



8. EXCEL GRAPHICS

Problem Areas



9. MULTILINGUAL CHARACTERS

9.1. Typical Letters of the New Languages and Greek

Language	Country	Typical letters	Typical word
Bulgarian	България	ъ	Европейския
Czech	Česká republika	ď, ě, ř, ť, ů	žhář
Estonian	Eesti	ä, õ, ü	võtta
Hungarian	Magyarország	á, é, í, ó, ö, ü, ő, ű	időpontjától
Lithuanian	Lietuva	ė, ū, j, ū	įstojimo
Latvian	Latvija	ķ, ļ, ņ, ā, ē, ī	sistēmā
Maltese	Malta	č, ġ, ħ/ħ, ż	ieħor
Polish	Polska	ł, ą, ć, ę, , ħ, ó, ś, ść, ź, ż, źdź	załączniku
Romanian	România	â, ă, î, ș, ț	influență

Language	Country	Typical letters	Typical word
Slovak	Slovensko	ä, ď, ĺ, ŕ, ô, ŕ, ě	tíct'
Slovenian	Slovenija	č, š, ž	našteti
Turkish	Türkiye	â, ç, ğ, ı/l, i/î, î, ö, ş, û, ü	Çikip
Greek	Ελλάδα	Αα Αά Ββ Γγ Δδ Εε Έε Ζζ Ηη Ήή Θθ Ιι Ίι Ϊι Ϋκ Λλ Μμ Νν Ξξ Οο Όό Ππ Ρρ Σσ ς Ττ Υυ Ύύ Ϋϋ ΰ Φφ Χχ Ψψ Ωω Ώώ Eurosymbol: €€€€€€ €€€€€€	Ελληνική Δημοκρατία

10. COLOUR TEST



11. PHOTOGRAPHIC TEST 1



12. PHOTOGRAPHIC TEST 2

